

## Image Systems Grayscale Displays

2 MP

3 MP

Because it has to be right

- Precise Gray-Shades
- Medical Grade
- Luminance Uniformity Control
- Digital Ambient Light Sensor
- Retractable Self-Calibrating Front Sensor

*Radiologists* have come to expect highly accurate and calibrated displays from **Image Systems** enabling them to promote positive patient outcomes. We continue to meet these expectations with the **Image Systems Professional Series** 2 and 3Mega-Pixel LCDs.

These displays offer functionality that is tied to our proprietary **Calibration Feedback System™ (CFS)** software assuring users of consistent DICOM® compliant images throughout the life of their LCD.

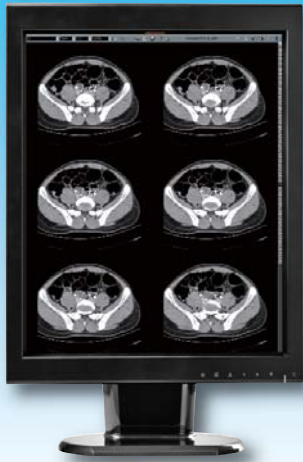


These high performance diagnostic displays are designed to utilize commercial off-the-shelf (COTS) graphics cards to make them more flexible and affordable for end-users.

## Specifications & Features

2 MP

3 MP



Series Model / Type	2MP Mono HB (X-Series) MX2MP	3MP Mono HB (X-Series) MX3MP	3MP Mono HB (P-Series) FPP20HXP
LCD panel	TFT AMLCD IPS Grayscale		
Screen size	21.3" / 540 mm	21.3" / 541.4 mm	20.8" / 528 mm
Viewable image size	432.0 × 324.0 mm	433.1 × 324.8 mm	423.9 × 318.0 mm
Resolution	2MP (1200 × 1600)	3MP (1536 × 2048)	
Pixel pitch	0.270 × 0.270 mm	0.2115 × 0.2115 mm	0.207 × 0.207 mm
Brightness (max. typ.)	1650 cd/m <sup>2</sup>	1450 cd/m <sup>2</sup>	1000 cd/m <sup>2</sup>
Brightness calibrated	500 cd/m <sup>2</sup> (typ.)		
Contrast ratio (typ.)	850:1	900:1	900:1 w/o LUC 750:1 w/ LUC
Viewing angle (H × V)	176° / 176°		170° / 170°
Input signal	DVI-D, DisplayPort		DVI-D
Sync type	H-sync: 75 - 78 kHz V-sync: 60 - 62 Hz Dot CLK: 160 - 170 MHz (single)	H-sync: 92 - 98 kHz V-sync: 58 - 62 Hz Dot CLK: 120 - 132 MHz (dual)	
Bit depth	14 bit		12 bit
Calibration	Built in sensor with Calibration Feedback System (CFS™) enables self-calibration		
Admin software	Local: CFS™, Enterprise: CFS™ WebSuite		
Sensors	front, rear, ambient, temp.		
VESA mounting	100 × 100 mm		
Tilt / swivel / height adjustment	-3°, +15° / ±20° / 110 mm		3°, ±30° / ±30° / 108 mm
Operating	0 to 40 °C		
Storage	-20° to 60 °C; 4° to 140° F		
Power supply	(internal) AC Input: AC100-240 V ±10%, 60 Hz / 50 Hz ± 3Hz		AC 100-240 V ±10%, 60/50 Hz ±3 Hz DC 12 V, 6.67 A
Power consumption	85 W		75 W
Power saving	DVI DMPM - less than 1 W		DVI DMPM
Certifications	UL60601-1, CSA std., C22.2 No. 601.1, IEC/EN60601-1, CE, FCC Class B, ICES-003-B, VCCI-B, CCC, KCC, C-Tick		UL60601-1, CE, CCC, IEC/EN60601-1, FCC Class B, VCCI, CE, MIC, CCC
Warranty display	60 months		
Other	Luminance Uniformity Control (LUC), USB, LED PrivateLight, self diagnostic tool		LUC, USB

FEATURES

### Calibration Feedback System - CFS™

Accurate and consistent presentation of images is a critical requirement for radiology displays.

### Image Systems' Calibration Feedback System (CFS™)

comes standard with every **Image Systems** display and ensures your LCD is calibrated properly for DICOM® 3.14 compliance.

### Self-Calibration Front Sensor

Assures life-time DICOM® 3.14 compliance.

### Stable Brightness Control

Automatically with rear backlight sensor.

### Calibration Precision

Look-up Tables up to 14 bits.

### Digital Ambient Light Sensor

Warns on significant room lighting changes.

### Luminance Uniformity Control

Optimizes uniformity across screen.

### About Image Systems

For the last 20 years, **Image Systems** has been recognized as an industry-leading display brand by consistently providing the highest quality diagnostic and clinical display solutions to the healthcare industry.



Comprehensive Technical Support

Learn more at [teklink.canvys.com](http://teklink.canvys.com)

Hot Swap



Extended Warranty & Advance Replacement Program